

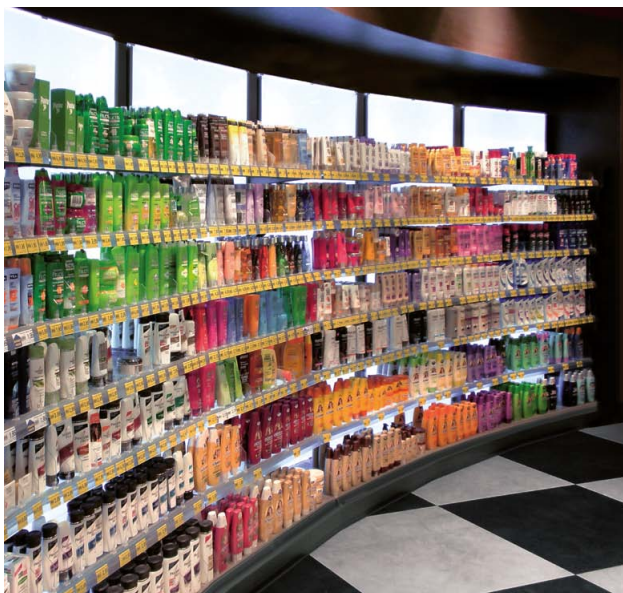


## Creative Presentation **LED Modular System *Style M***



### **For trade fairs**

Set clear accents! The application of modern, white luminous LED technology offers unexpected prospects for increasing the look of your portfolio.



### **For stores**

With custom finished, integrative light surfaces or luminous image arrays with an elegant aluminium finish – active light design with *Style M* puts your products in a contemporary, right light.



### Made-to-measure

- Individual sizes up to 3 m x 1.5 m
- Option: silver anodised aluminium frame for illuminated images, extremely flat, with easy change action



### Features

- Consistent, high luminosity
- Neutral white background without colour fluctuation
- Mountable in existing systems
- High quality 2- or 4-Chip LED technology
- Low power consumption
- Invisible power-supply via suspension cables
- Complete with fitting-set
- Short delivery times
- German-made & German guarantee